

LUZ[®]

PANEL LUMINAIRE

Visual Comfort. Optimum Performance.



LUZ[®] Recessed Grid (Standard)



LUZ[®] Black Frame (Optional)

Offering architectural grade design with value pricing, the LUZ[®] provides exceptional visual comfort in a flawless panel luminaire. The **LUZ[®] Panel Luminaire** was developed to specify in or upgrade interior spaces where troffer and parabolic luminaires are typically installed. It is ideal for applications such as offices, K-12 schools, universities and non-surgical medical facilities.

The LUZ[®] is available in a variety of sizes and in the choice of recessed grid, surface mount and pendant quad cable mounting systems.

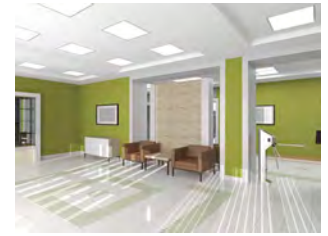
SLEEK DESIGN. HIGH PERFORMANCE.

A highlight of the design is its slim profile. At less than an ½" inch thick, its advanced opalescent panels diffuse light evenly for a smooth, luminous glow. The LUZ[®] also contains the latest in LED technology and durability, eliminating glare, dark spots, streaks and pixilation commonly found from lesser grade edge lit LED panels.

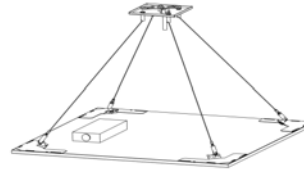
The LUZ[®] Panel Luminaire works with emergency battery back-up and most wireless control systems.

FEATURES AND BENEFITS

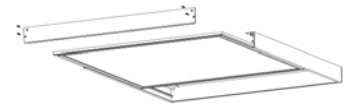
- Provides even illumination with minimal glare creating one of the highest visual comfort ratings in the industry
- Extremely thin allowing it to be installed in any ceiling space
- Utilizes high quality LEDs that are binned to within three MacAdam ellipses to ensure color consistency
- Well controlled LED temperatures ensures color and output stability and long life
- Extruded aluminum frame with white powder coat finish and mitered corners eliminate light leak



- 0-10V dimming compatibility standard
- Sizes: 2x2, 2x4, 1x4
- 2.5" deep with driver (< 0.5" without driver)
- Lumen Packages: 2,400 – 7,500
- Efficacy: 100lm/W
- CCT: 3500K, 4000K, 5000K
- L70 > 50,000 hours
- Compatible with most wireless control systems
- DLC listed qualifying it for rebates across the country
- Options available: Battery backup, surface and pendant mount, colored frames



LUZ® Pendant Quad Cable Mount (Optional)



LUZ® Surface Mount (Optional)

APPLICATION GUIDE

LUZ® 2X2							
Luminaire Spacing	2400 lumens		3200 lumens		4000 lumens		Max / Min
	Illuminance (fc)	Watts / Sq Ft	Illuminance (fc)	Watts / Sq Ft	Max / Min	Watts / Sq Ft	
8' x 8'	43	0.32	58	0.47	68	0.59	1.21
8' x 10'	34	0.26	46	0.37	54	0.47	1.34
10' x 10'	27	0.21	37	0.30	44	0.38	1.52
10' x 12'	23	0.17	31	0.25	37	0.31	1.79

LUZ® 2X4							
Luminaire Spacing	4000 lumens		5000 lumens		7500 lumens		Max / Min
	Illuminance (fc)	Watts / Sq Ft	Illuminance (fc)	Watts / Sq Ft	Max / Min	Watts / Sq Ft	
8' x 8'	71	0.55	89	0.78	123	1.18	1.12
8' x 10'	57	0.44	72	0.63	99	0.94	1.21
10' x 10'	46	0.35	58	0.50	80	0.75	1.40
10' x 12'	39	0.29	49	0.42	67	0.63	1.58

ASSUMPTIONS

LUZ® 2x2, 4000 K, Spacing Criteria (SC): 1.28
 LUZ® 2x4, 4000 K, Spacing Criteria (SC): 1.28
 Reflectance: 80/50/20, 9ft mounting height